

FCF Series (Flat Curve)

Feature and strengths

- ✓ Highest transmission of holding forces
- ✓ Highly wear-resistant PU material
- ✓ Especially on oily sheet metal handling
- ✓ Avoidance of deep-drawing, even with thin sheets



Suitable for handling

- . Flat sheet metal
- . Press line
- . Veneer sheet
- . Automotive panels
- . Slightly curved surface



Order No.

FCF80 PU - 18F

| | |
 ① ② ③

① Suction Cup Ø

●	FCF 80 - Ø 80
	FCF100 - Ø 100
	FCF125 - Ø 125

② Material

●	PU - Poly Urethane
	WPU - White Poly Urethane

③ Thread size

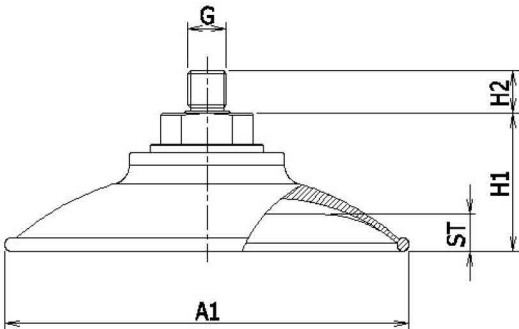
●	18F - G1/8" female
	14F - G1/4" female
	38F - G3/8" female
	12F - G1/2" female
	N18F - NPSF1/8" female
	N14F - NPSF1/4" female
	N38F - NPSF3/8" female
	18M - G1/8" male
	14M - G1/4" male
	38M - G3/8" male
	M10M - M10XP1.5 male



Recommended (max.) lifting forces

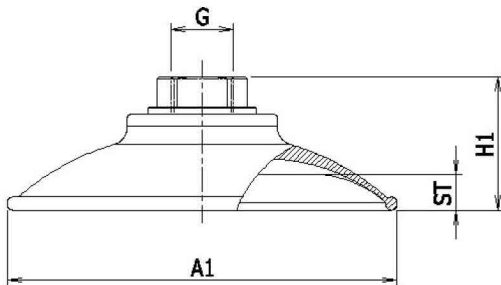
Model	Volume (cm ³)	Lifting Force (kg) - Perpendicular			Lifting Force (kg) - Parallel		
		-20 kPa	-60 kPa	-90 kPa	-20 kPa	-60 kPa	-90 kPa
FCF80	36.0	9	23	31	8	23	28
FCF100	58.0	14	35	48	12	32	45
FCF125	115.0	20	49	68	18	42	64

Dimensional information



Model	A1	ST	H1	H2	G
FCF80...18M	82.5	7.6	35	11	G1/8"
FCF80...14M					G1/4"
FCF80...38M					G3/8"
FCF80...M10M					M10XP1.5
FCF100...18M	104	9.5	36	11	G1/8"
FCF100...14M					G1/4"
FCF100...38M					G3/8"
FCF100...M10M					M10XP1.5
FCF125...18M	128	13	43	11	G1/8"
FCF125...14M					G1/4"
FCF125...38M					G3/8"
FCF125...M10M					M10XP1.5

Dimensional information



Model	A1	ST	H1	G
FCF80...18F	82.5	7.6	35	G1/8"
FCF80...14F				G1/4"
FCF80...38F				G3/8"
FCF80...12F				G1/2"
FCF80...NF18F				NPSF 1/8"
FCF80...NF14F				NPSF 1/4"
FCF80...NF38F				NPSF 3/8"
FCF100...18F	104	9.5	36	G1/8"
FCF100...14F				G1/4"
FCF100...38F				G3/8"
FCF100...12F				G1/2"
FCF100...NF18F				NPSF 1/8"
FCF100...NF14F				NPSF 1/4"
FCF100...NF38F				NPSF 3/8"
FCF125...18F	128	13	43	G1/8"
FCF125...14F				G1/4"
FCF125...38F				G3/8"
FCF125...12F				G1/2"
FCF125...NF18F				NPSF 1/8"
FCF125...NF14F				NPSF 1/4"
FCF125...NF38F				NPSF 3/8"